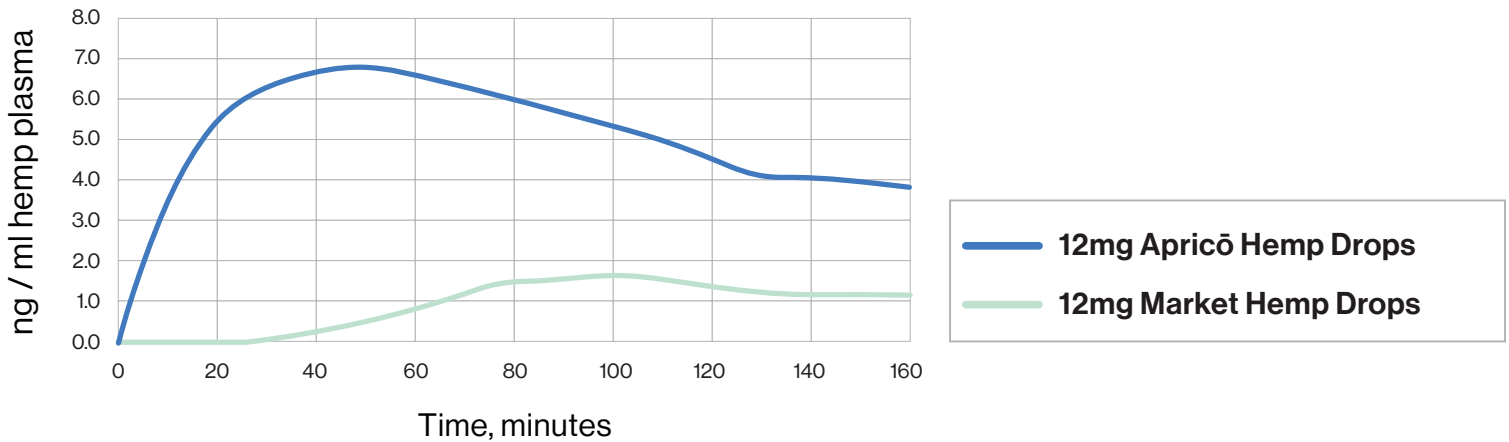


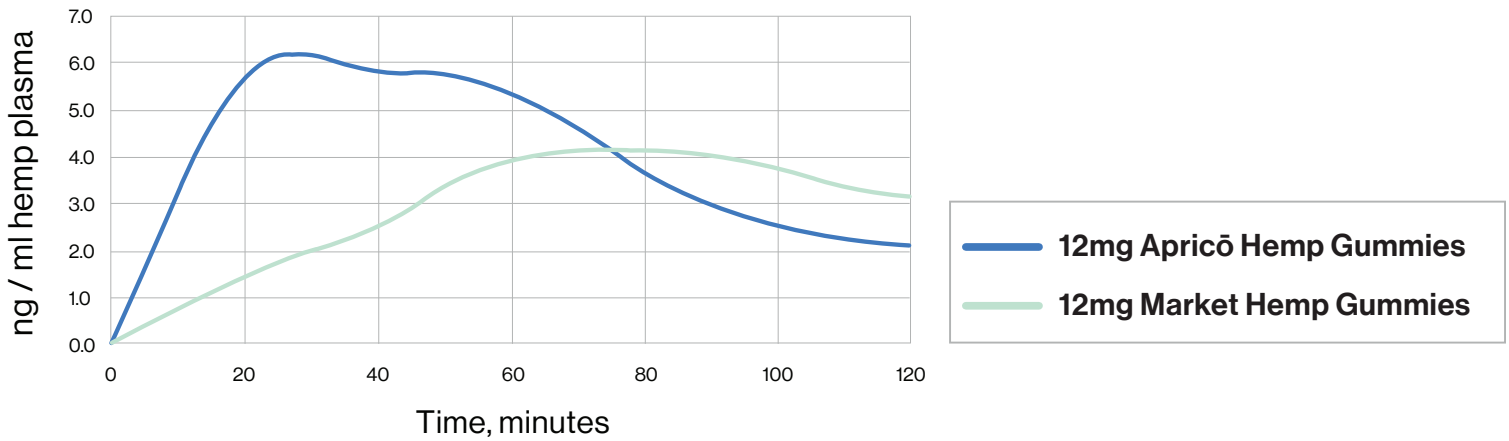
## NANOEMULSIFIED HEMP EXTRACT ABSORPTION STUDIES

### Uptake studies compares Apricō nanoemulsified hemp with other hemp products

**HEMP DROPS**  
10 person uptake study



**HEMP GUMMIES**  
7 person uptake study



### HOW TO READ THE STUDIES

The vertical axis measures nanograms of hemp / milliliter of blood plasma - essentially measuring the weight of hemp in your blood.

The horizontal axis measures time in minutes that hemp reaches and stays in your system.

Apricō delivers 5x greater absorption and at much faster rates than other products.